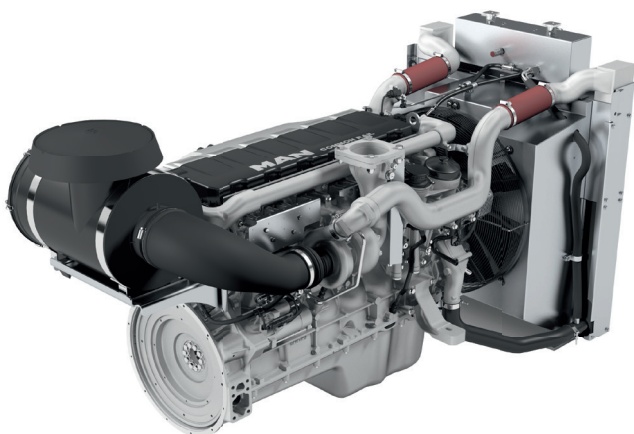


D2676 LE241

Industrial Diesel Engine for
Pump Drive Application



MAN Engines



GENERAL DESCRIPTION

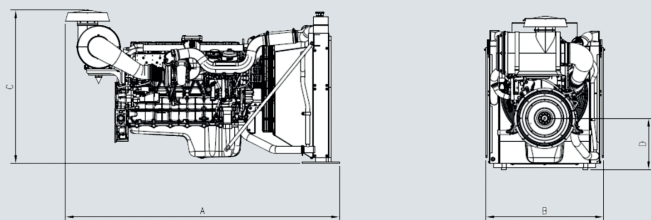
Characteristics

- Engine Type four-stroke, direct fuel injection
- Cylinders 6, in line, wet replaceable cylinder liners
- Aspiration turbocharger, intercooler
- Cooling water circulation by centrifugal pump on engine
- Lubrication force-feed lubrication by gear pump, lubricating oil cooler in cooling water circuit of engine
- Injection Common Rail System 1800 bar, type EDC7 C32
- Direction of rotation counter clock, looking on flywheel
- Exhaust emission level EU 97/68 EG Stage 2

TECHNICAL DATA

Characteristics	Unit	General data
Cylinders		6
Bore	mm	126
Stroke	mm	166
Swept volume	l	12.42
Compression ratio		15.5:1
IFN power @1800 rpm	kW	415
ICXN power @1800 rpm ¹⁾	kW	377
Rated speed	rpm	1800
Min. idling speed	rpm	600
Max. operating speed	rpm	1900
Maximum torque	Nm	2292
At speed	rpm	1500

¹⁾ Engine performance according to ISO 3046-1, engine performance without deration under the condition of altitude below 350m and ambient temperature below 50°C. For other conditions engine performance deration due to ambient temperature and altitude has to be taken into account.



Dimensions

A-Overall length	mm	2518
B-Overall width	mm	1080
C-Overall height	mm	1406
D-Height of lower edge of oil pan to middle of crankshaft	mm	470
Dry weight engine	kg	1003
Dry weight radiator	kg	162

All data are reference values, please request installation drawings for detailed specifications.

MAN Truck & Bus AG
Vogelweiherstr.33
90441 Nuremberg
www.man-engines.com

MAN Truck & Bus – a member of the MAN Group